

RS MI Performance Dashboard - DRAFT

[View in Power BI](#) ↗

Last data refresh:
26/05/2023 11:48:37 UTC

Downloaded at:
06/06/2023 08:17:13 UTC



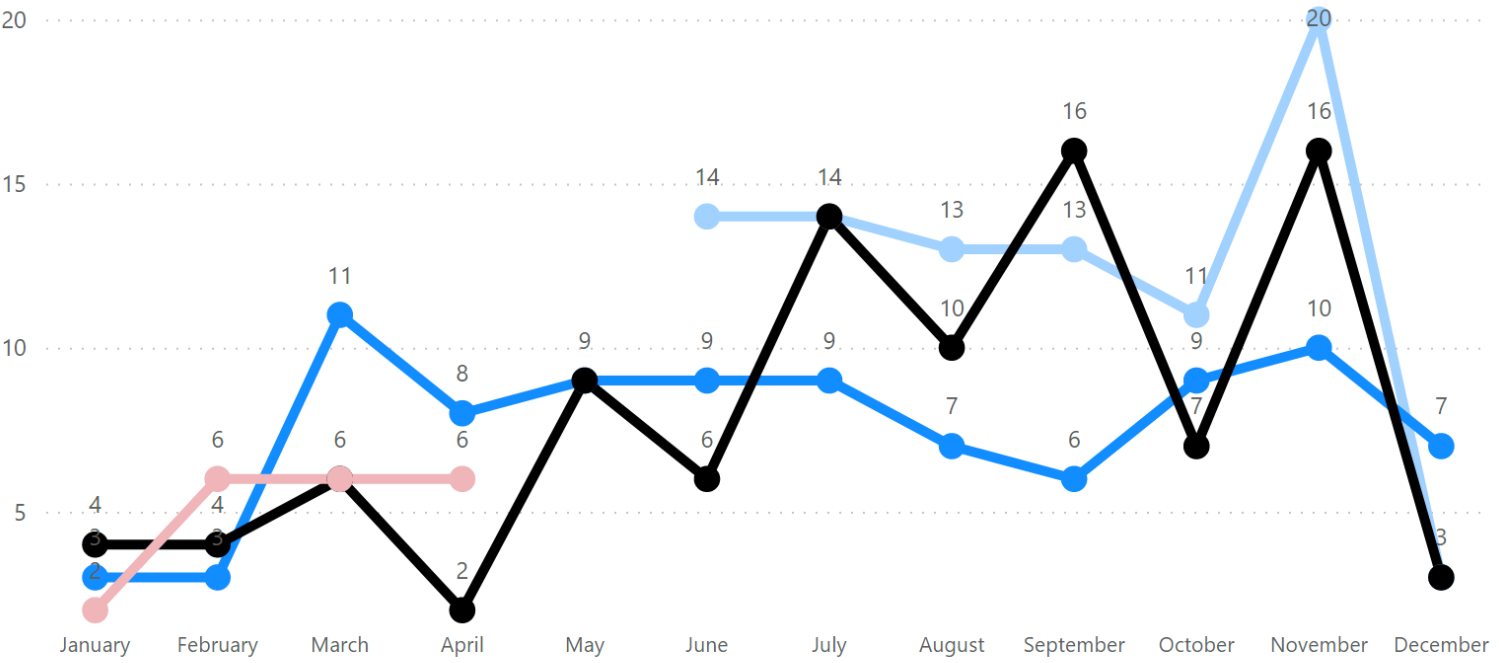
Rough sleeping management information - Snapshot

Date: April 2023 | Region: All | Local Authority: Islington

Reset Filters

No. of people sleeping rough on a single night

Year: 2020, 2021, 2022, 2023



6 No. of people sleeping rough on a single night April 2023

0 Change in no. of people sleeping rough since March 2023

0% % Change in no. of people sleeping rough since March 2023

4 Change in no. of people sleeping rough since April 2022

200% % Change in no. of people sleeping rough since April 2022

No. of people sleeping rough on a single night, by month by LA

Local Authority	No. of people sleeping rough on a single night	Change since last month
Islington	6	0
Adur	No Data	
Allerdale	No Data	
Amber Valley	No Data	
Arun	No Data	
Ashfield	No Data	
Ashford	No Data	
Babergh	No Data	
Barking and Dagenham	No Data	
Barnet	No Data	
Barnsley	No Data	
Barrow-in-Furness	No Data	
Basildon	No Data	
Basingstoke and Deane	No Data	
Bassetlaw	No Data	
Bath and North East Somerset	No Data	
Bedford	No Data	
Bexley	No Data	
Total	6	0

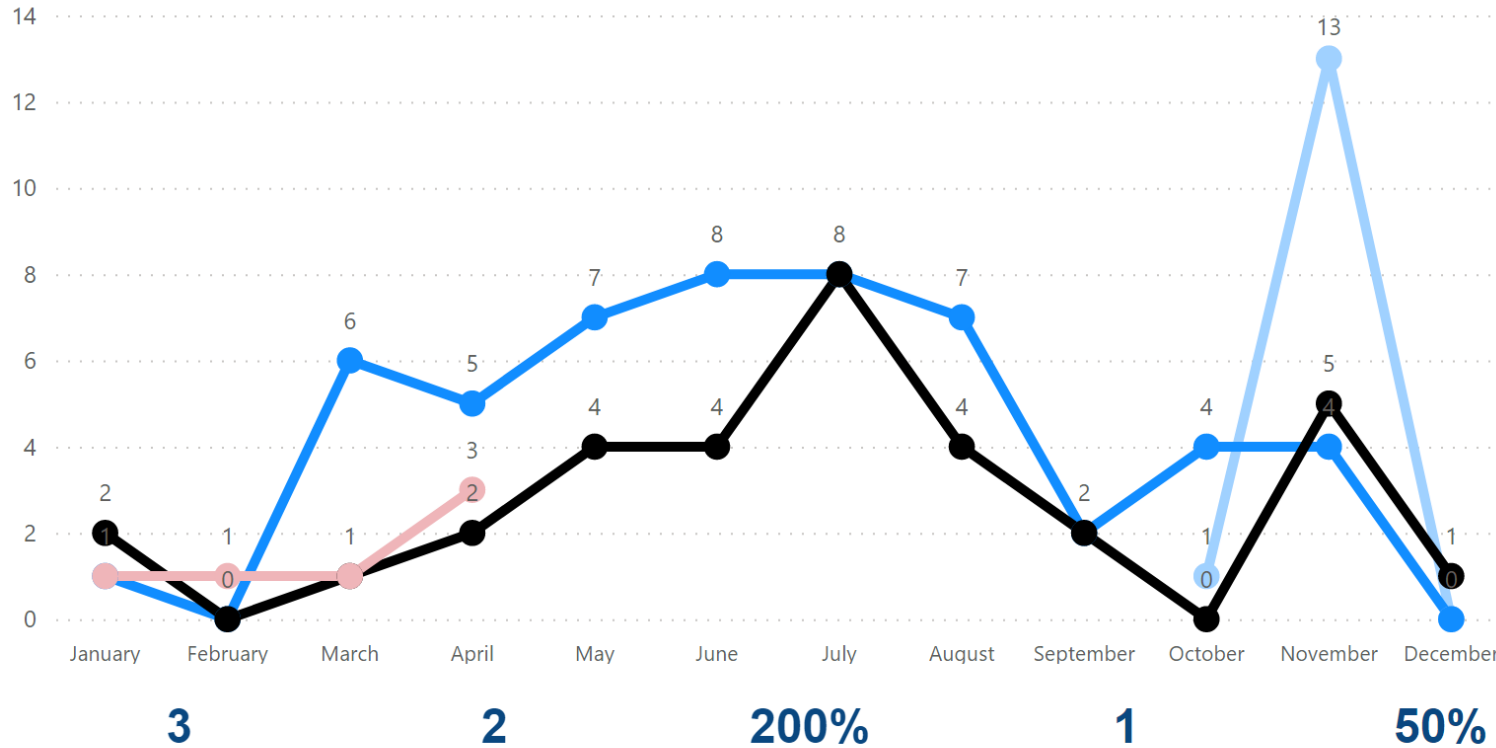
Rough sleeping management information - new rough sleepers on a single night

Date: Region: Local Authority:

Reset Filters

No. of new people sleeping rough on a single night

Year: 2018 2019 2020 2021 2022 2023



No. of new people sleeping rough on a single night April 2023

Change in new people sleeping rough since March 2023

% Change in new people sleeping rough since March 2023

Change in new people sleeping rough since April 2022

% Change in new people sleeping rough since April 2022

No. of new people sleeping rough on a single night, by month by LA

Local Authority	No. of new people sleeping rough on a single night	Change since last month	% Change since last month
Islington	3	2	200
Adur	No Data		
Allerdale	No Data		
Amber Valley	No Data		
Arun	No Data		
Ashfield	No Data		
Ashford	No Data		
Babergh	No Data		
Barking and Dagenham	No Data		
Barnet	No Data		
Barnsley	No Data		
Barrow-in-Furness	No Data		
Basildon	No Data		
Basingstoke and Deane	No Data		
Bassetlaw	No Data		
Bath and North East Somerset	No Data		
Total	3	2	200

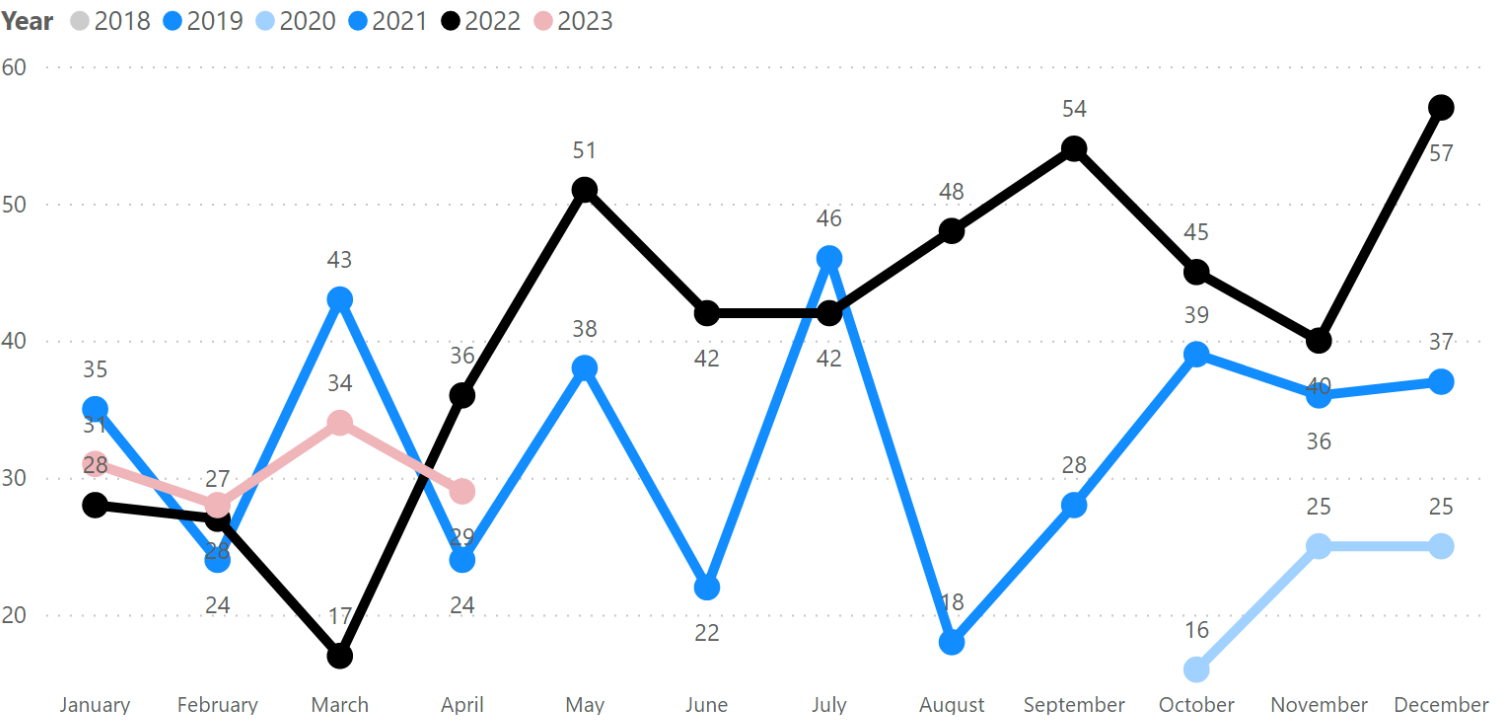


Rough sleeping management information - rough sleeping over the month

Date: Region: Local Authority:

Reset Filters

No. of people sleeping rough over the course of the month



No. of people sleeping rough over the month, by month by LA

Local Authority	No. of people sleeping rough this month	Change since last month	% Change since last month
Islington	29	-5	-15%
Adur	No Data		
Allerdale	No Data		
Amber Valley	No Data		
Arun	No Data		
Ashfield	No Data		
Ashford	No Data		
Babergh	No Data		
Barking and Dagenham	No Data		
Barnet	No Data		
Barnsley	No Data		
Barrow-in-Furness	No Data		
Basildon	No Data		
Basingstoke and Deane	No Data		
Bassetlaw	No Data		
Bath and North East Somerset	No Data		
Bedford	No Data		
Total	29	-5	-15%

29 No. of people sleeping rough over the month April 2023

-5 Change in monthly rough sleeping since March 2023

-15% % Change in monthly rough sleeping since March 2023

-7 Change in monthly rough sleeping since April 2022

-19% % Change in monthly rough sleeping since April 2022



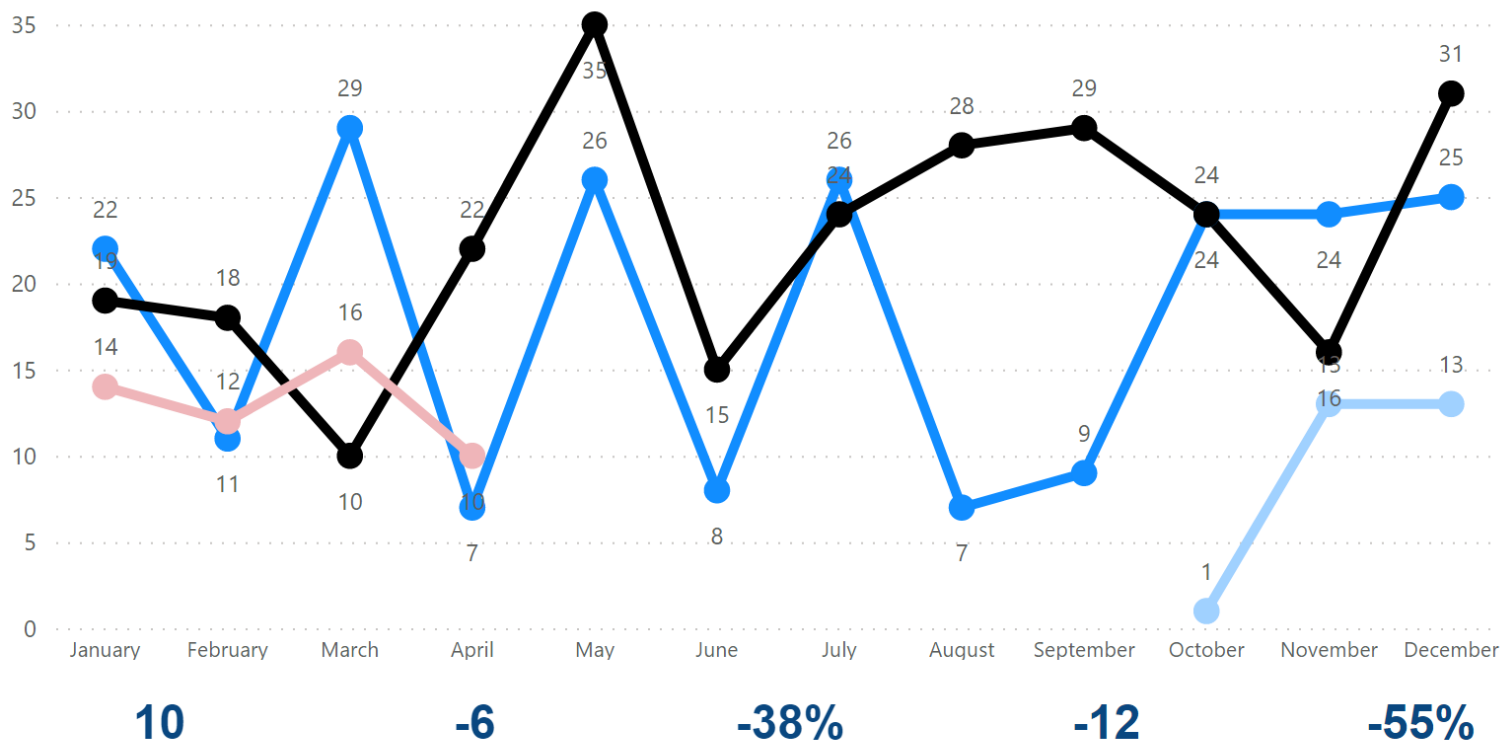
Rough sleeping management information - new rough sleepers over the month

Date: Region: Local Authority:

Reset Filters

No. of new people sleeping rough over the course of the month

Year ● 2018 ● 2019 ● 2020 ● 2021 ● 2022 ● 2023



No. of new people sleeping rough over the course of April 2023

Change in no. of new people sleeping rough over the course of the month since March 2023

% Change in no. of new people sleeping rough over the course of the month since March 2023

Change in no. of new people sleeping rough over the course of the month compared to

% Change in no. of new people sleeping rough over the course of the month compared to

No. of new people sleeping rough over the month, by month by LA

Local Authority	No. of new people sleeping rough this month	Change since last month	% Change since last month
Islington	10	-6	-
Adur	No Data		
Allerdale	No Data		
Amber Valley	No Data		
Arun	No Data		
Ashfield	No Data		
Ashford	No Data		
Babergh	No Data		
Barking and Dagenham	No Data		
Barnet	No Data		
Barnsley	No Data		
Barrow-in-Furness	No Data		
Basildon	No Data		
Basingstoke and Deane	No Data		
Bassetlaw	No Data		
Bath and North East Somerset	No Data		
Bedford	No Data		
Total	10	-6	-

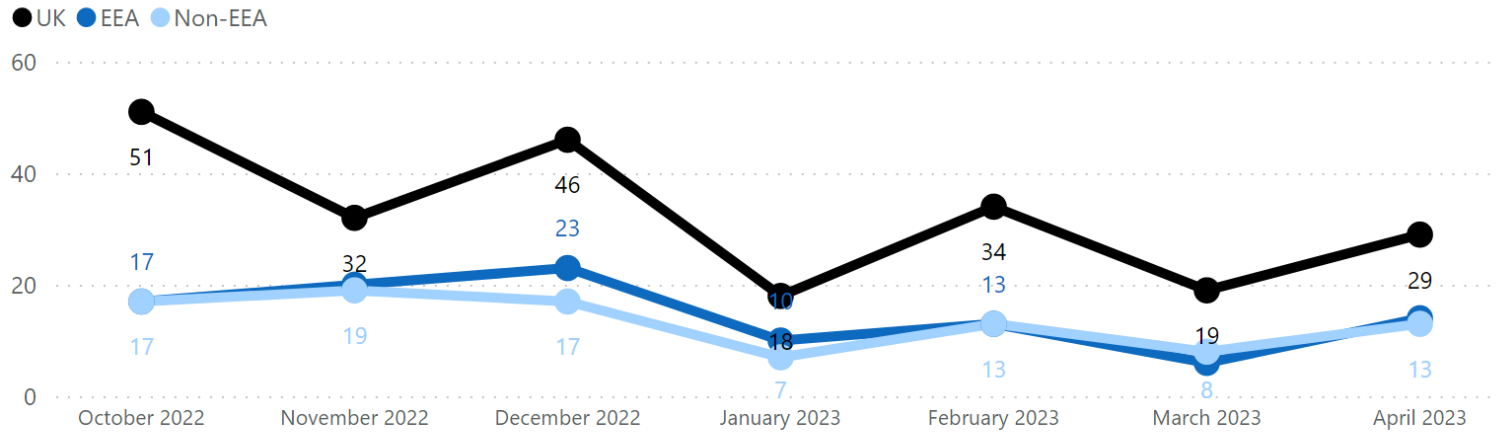


Rough sleeping management information - Nationality (combined cohort)

Date: April 2023 | Region: All | Local Authority: Islington

Reset Filters

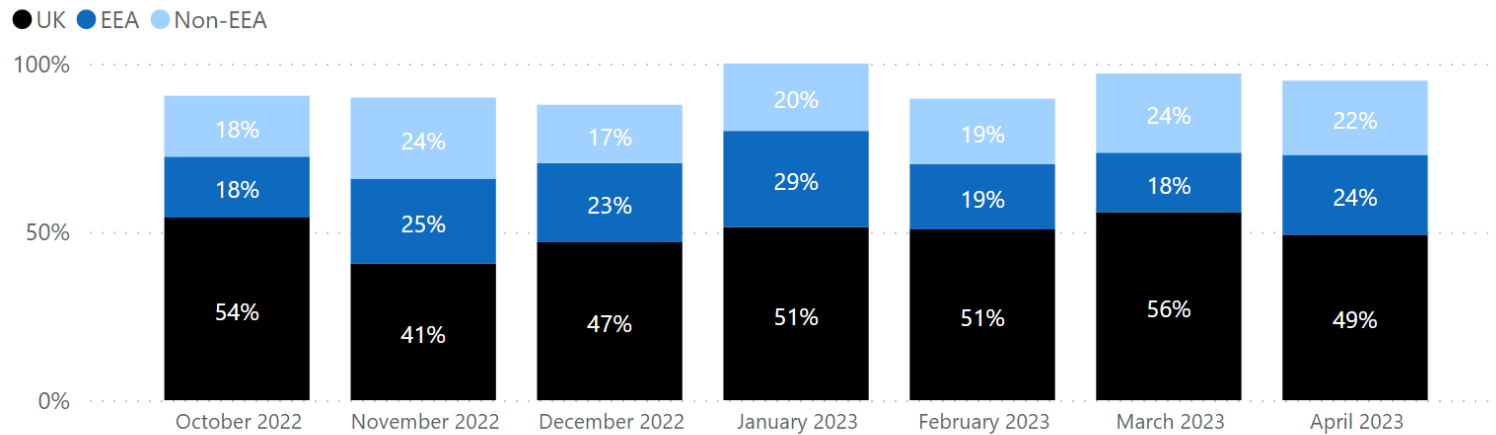
No. of people sleeping rough over the course of the month and those in off the street accommodation by nationality



No. of non-uk people sleeping rough over the course of the month and those in off the street accommodation by month by LA

Local Authority	Non UK people sleeping rough over the month	% Non UK people difference from last month	Non UK difference from last month	Non UK difference from Monday, October 31, 2022
Islington	27	-48%	0	-13
Total	27	-48%	0	-13

% of people sleeping rough over the course of the month and those in off the street accommodation by nationality



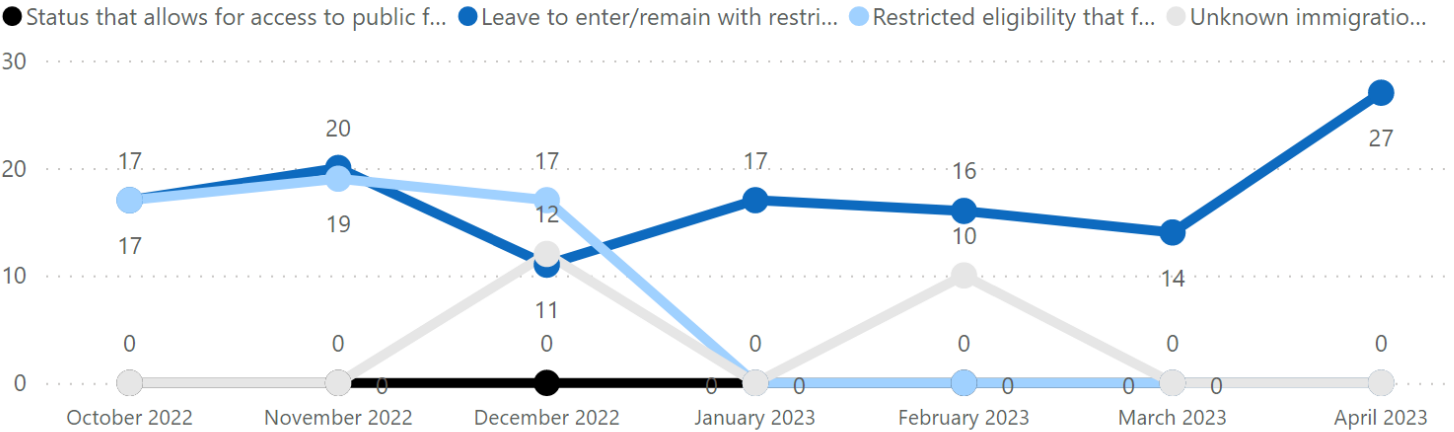


Rough sleeping management information - Immigration (combined cohort)

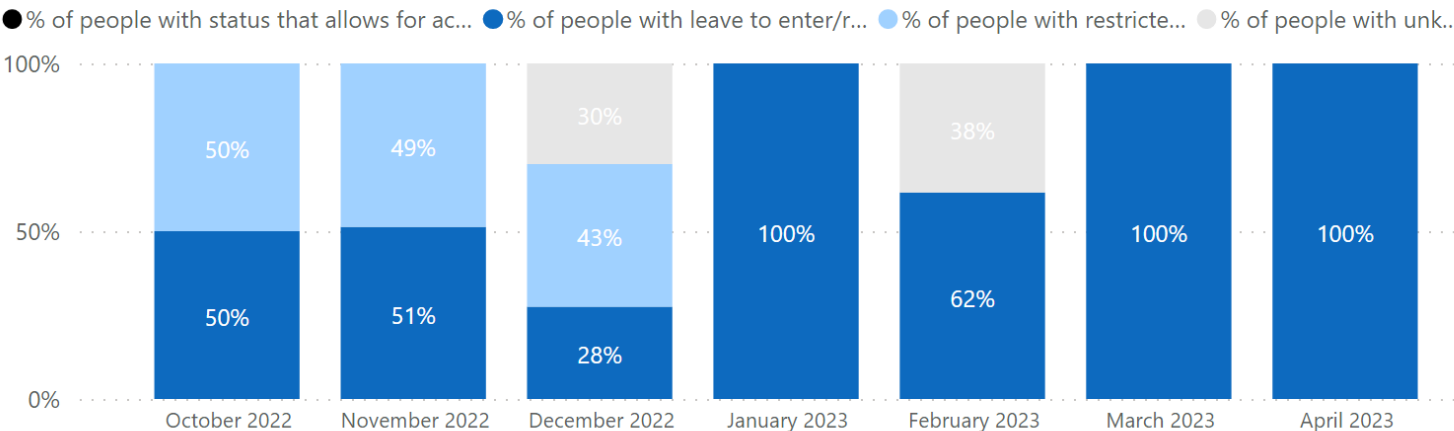
Date: Region: Local Authority:

Reset Filters

No. of people sleeping rough over the course of the month and those in off the street accommodation by immigration status



% of people sleeping rough over the course of the month and those in off the street accommodation by immigration status.



No. of non-uk people sleeping rough over the course of the month and those in off the street accommodation by month by LA

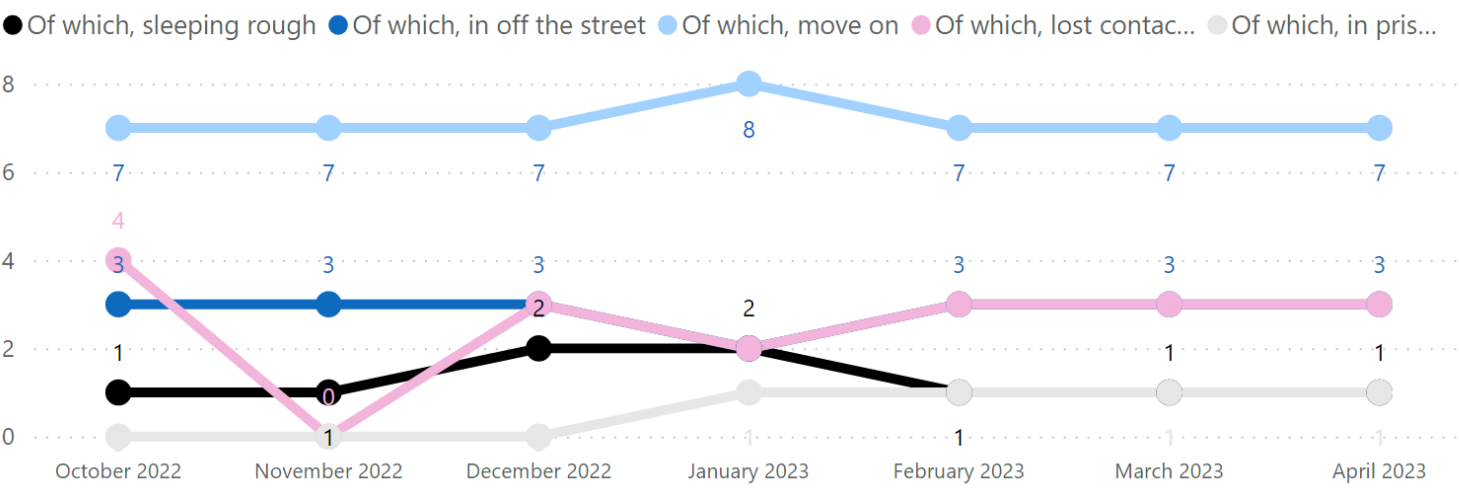
Local Authority	Non-UK nationals with status that allows for access to public funds
Islington	0
Adur	No Data
Allerdale	No Data
Amber Valley	No Data
Arun	No Data
Ashfield	No Data
Ashford	No Data
Babergh	No Data
Barking and Dagenham	No Data
Barnet	No Data
Barnsley	No Data
Barrow-in-Furness	No Data
Basildon	No Data
Basingstoke and Deane	No Data
Bassetlaw	No Data
Bath and North East Somerset	No Data
Bedford	No Data
Bexley	No Data
Total	0



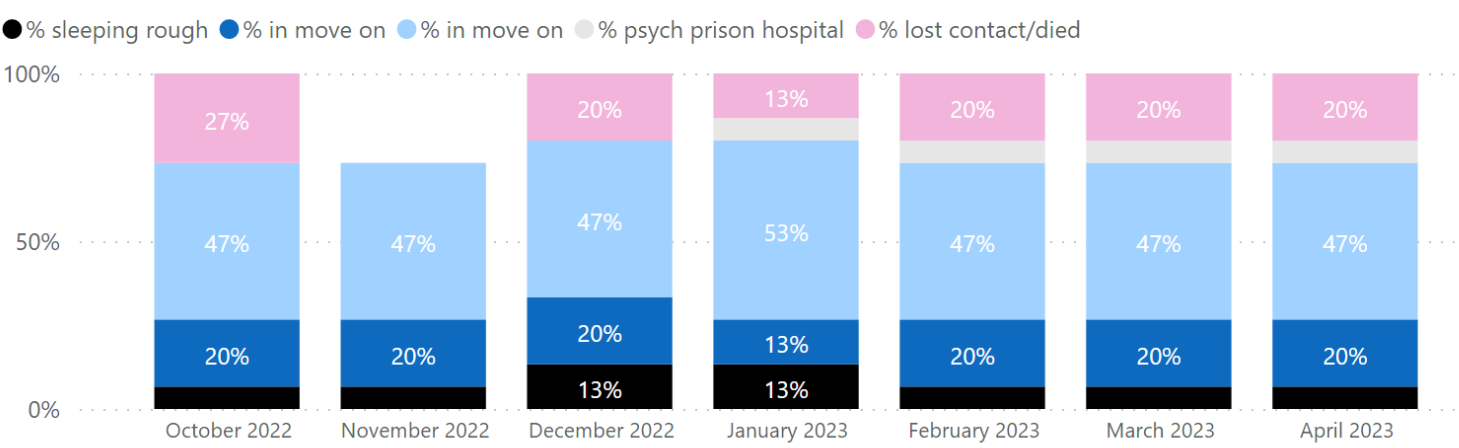
Date: Region: Local Authority:

Reset Filters

No. of long term repeat rough sleepers by outcome



% of long term repeat rough sleepers by outcome



No. of long term repeat rough sleeper, by outcome by month by LA

Local Authority	No. of repeat or long term rough sleepers	Of which, sleeping rough	% sleeping rough
Islington	15	1	6.7%
Adur	No Data	No Data	
Allerdale	No Data	No Data	
Amber Valley	No Data	No Data	
Arun	No Data	No Data	
Ashfield	No Data	No Data	
Ashford	No Data	No Data	
Babergh	No Data	No Data	
Barking and Dagenham	No Data	No Data	
Barnet	No Data	No Data	
Barnsley	No Data	No Data	
Barrow-in-Furness	No Data	No Data	
Basildon	No Data	No Data	
Basingstoke and Deane	No Data	No Data	
Bassetlaw	No Data	No Data	
Bath and North East Somerset	No Data	No Data	
Bedford	No Data	No Data	
Total	15	1	6.7%

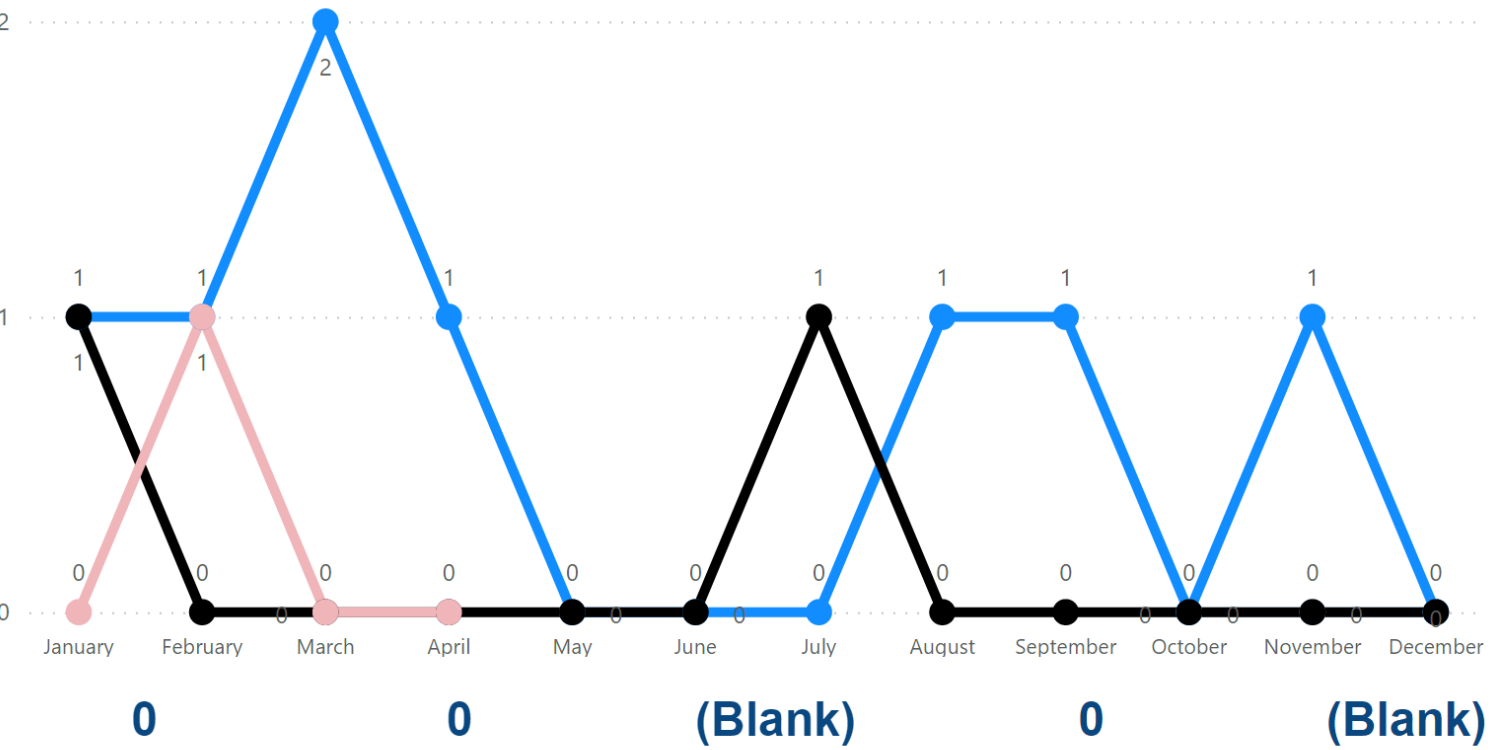
Rough sleeping management information - Evictions & Abandonments

Date: Region: Local Authority:

Reset Filters

No. of people sleeping rough who have been evicted/abandoned accommodation

Year ● 2018 ● 2019 ● 2020 ● 2021 ● 2022 ● 2023



No. who have been evicted/abandoned accommodation April 2023: 0

Change in evictions/abandonments since March 2023: 0

% Change in evictions/abandonments since March 2023: (Blank)

Change in evictions/abandonments since April 2022: 0

Change in evictions/abandonments since April 2022: (Blank)

No. of people sleeping rough who have been evicted/abandoned accommodation, by month by LA

Local Authority	No. of people currently sleeping rough who have been evicted or abandoned accommodation	Change since last month
Islington	0	(
Adur	No Data	
Allerdale	No Data	
Amber Valley	No Data	
Arun	No Data	
Ashfield	No Data	
Ashford	No Data	
Babergh	No Data	
Barking and Dagenham	No Data	
Barnet	No Data	
Barnsley	No Data	
Barrow-in-Furness	No Data	
Basildon	No Data	
Basingstoke and Deane	No Data	
Bassetlaw	No Data	
Bath and North East Somerset	No Data	
Total	0	(



Rough sleeping management information - No offer

Date

April 2023

Region

All

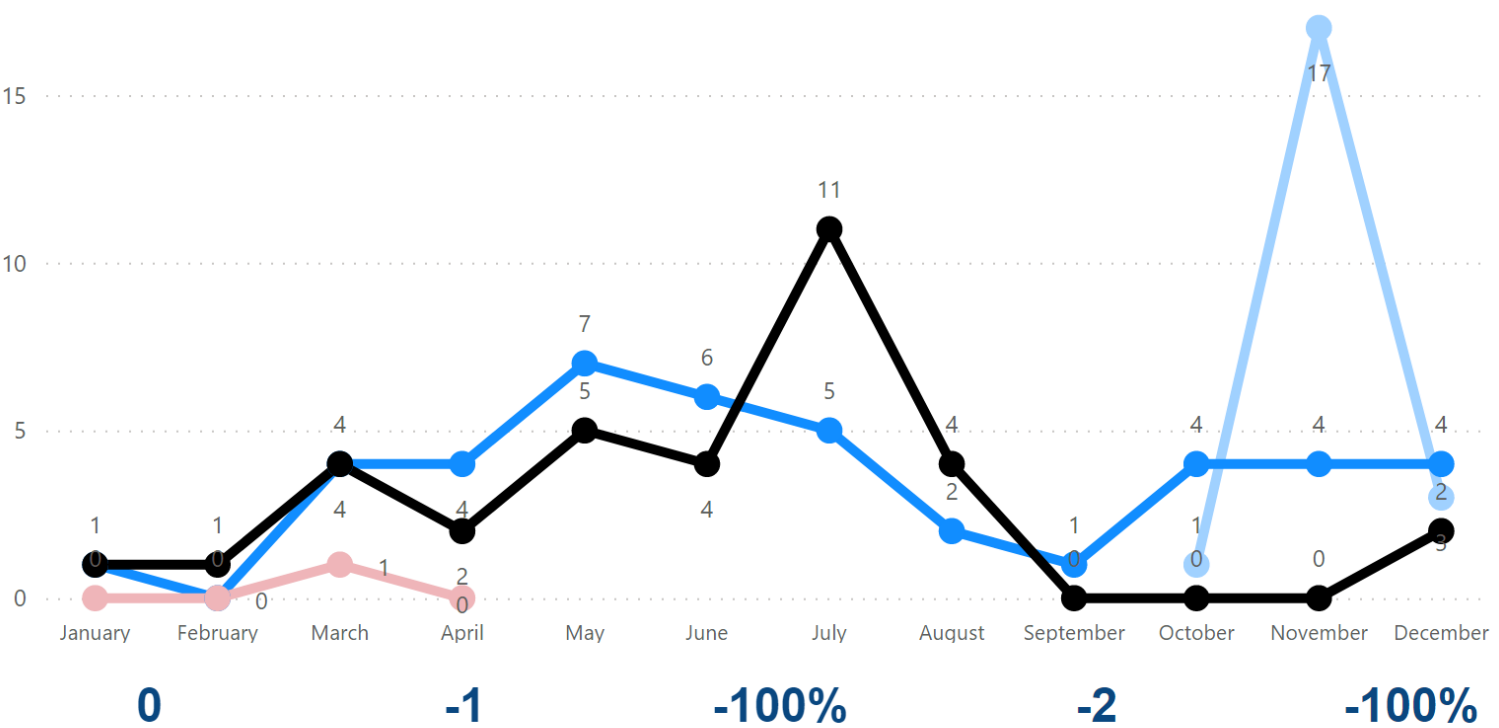
Local Authority

Islington

Reset Filters

No. of people sleeping rough with no offer

Year ● 2020 ● 2021 ● 2022 ● 2023



No. of people sleeping rough with no offer April 2023

Change in no. with no offer since March 2023

% Change in no. with no offer since March 2023

Change in no. with no offer since April 2022

% Change in no. with no offer since April 2022

No. of people sleeping rough with no offer, by month by LA

Local Authority	Number of people currently sleeping rough who have not had an offer of emergency or temporary accommodation	Change since last month	% Change since last month	Change since last year
Islington	0	-1	-100%	
Total	0	-1	-100%	

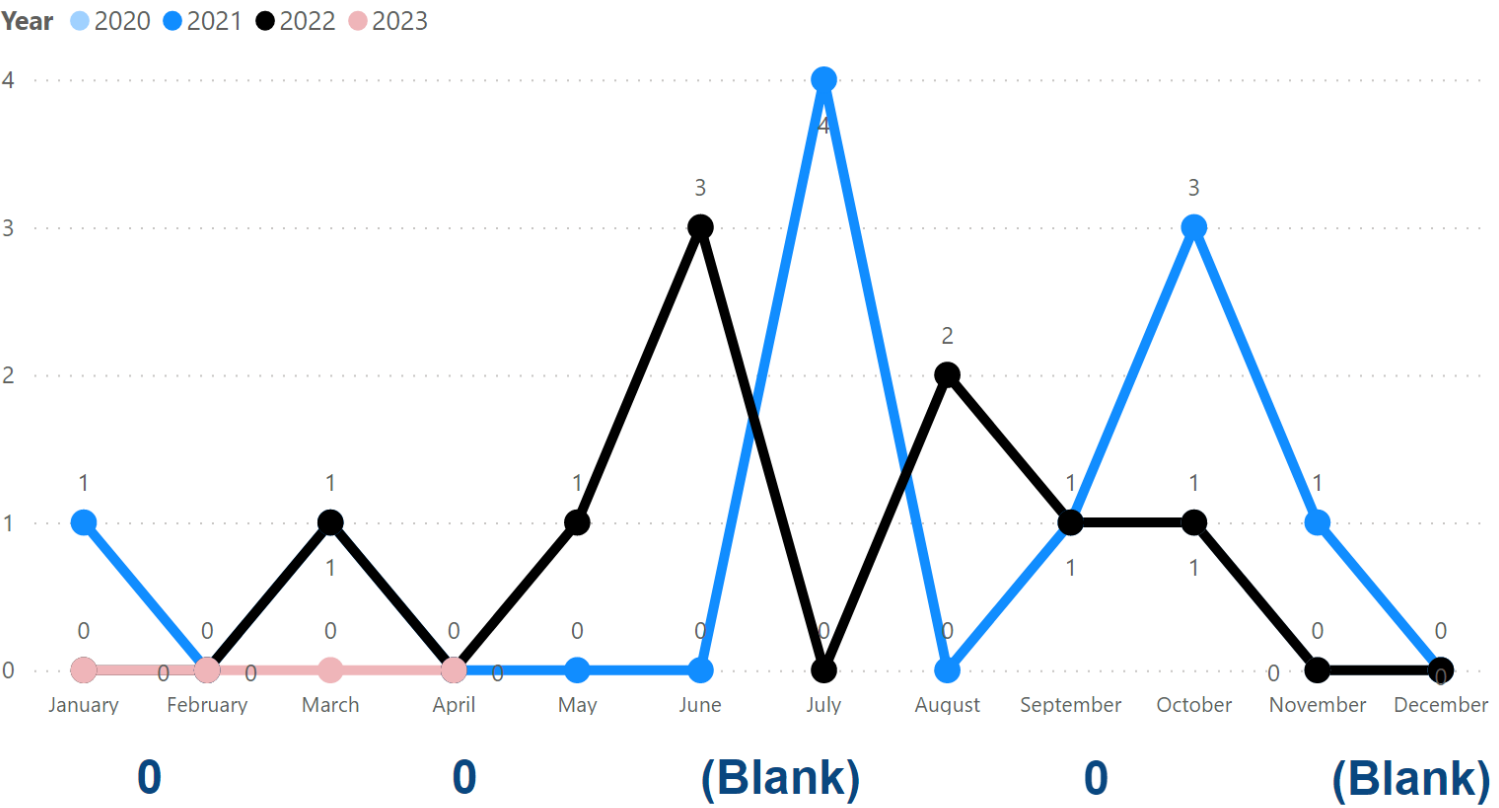


Rough sleeping management information - Housing placement available

Date: April 2023
 Region: All
 Local Authority: Islington

Reset Filters

No. of people sleeping rough who have a housing placement available



No. of people sleeping rough who have a housing placement available April 2023: 0

Change in housing placements available since March 2023: (Blank)

% Change in housing placements available since March 2023: (Blank)

Change in housing placements available since April 2022: 0

% Change in housing placements available since April 2022: (Blank)

No. of people sleeping rough who have a housing placement available, by month by LA

Local Authority	Number of people currently sleeping rough who had a tenancy or supported housing placement which was still available to them	Change since last month
Islington	0	
Adur	No Data	
Allerdale	No Data	
Amber Valley	No Data	
Arun	No Data	
Ashfield	No Data	
Ashford	No Data	
Babergh	No Data	
Barking and Dagenham	No Data	
Barnet	No Data	
Barnsley	No Data	
Barrow-in-Furness	No Data	
Basildon	No Data	
Basingstoke and Deane	No Data	
Bassetlaw	No Data	
Bath and North East Somerset	No Data	
Total	0	

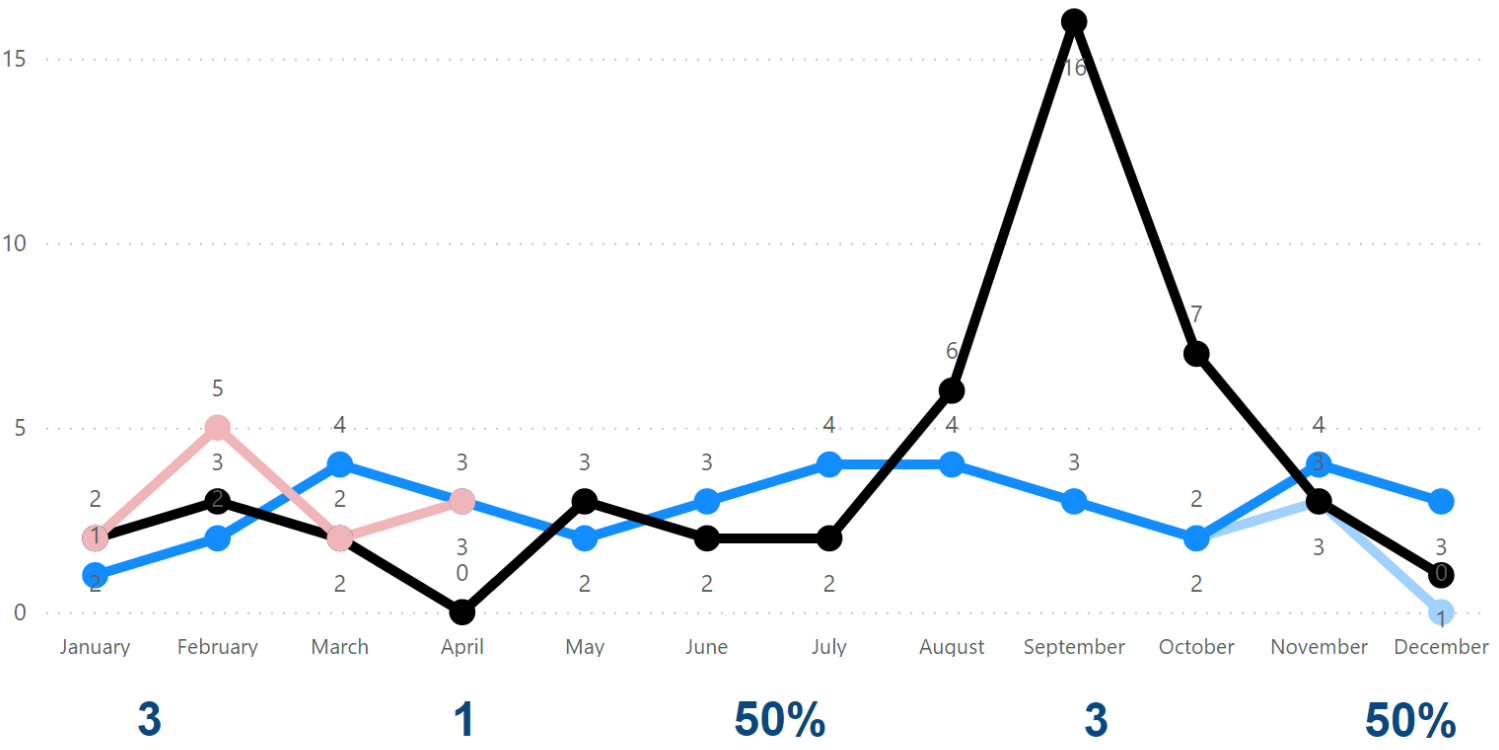
Rough sleeping management information - Refused offer

Date: April 2023
 Region: All
 Local Authority: Islington

Reset Filters

No. of people sleeping rough who have refused offer

Year ● 2020 ● 2021 ● 2022 ● 2023



No. of people sleeping rough who have refused an offer of Accommodation April

Change in refuse offers since March 2023

% Change in refuse offers since March 2023

Change in refuse offers since April 2022

% Change in refuse offers since April 2022

No. of people sleeping rough who have refused an offer, by month by LA

Local Authority	Number of people currently sleeping rough who have been made an offer of emergency or temporary accommodation and refused it as at 31 October	Change since last month
Islington	3	
Adur	No Data	
Allerdale	No Data	
Amber Valley	No Data	
Arun	No Data	
Ashfield	No Data	
Ashford	No Data	
Babergh	No Data	
Barking and Dagenham	No Data	
Barnet	No Data	
Barnsley	No Data	
Barrow-in-Furness	No Data	
Basildon	No Data	
Basingstoke and Deane	No Data	
Bassetlaw	No Data	
Total	3	

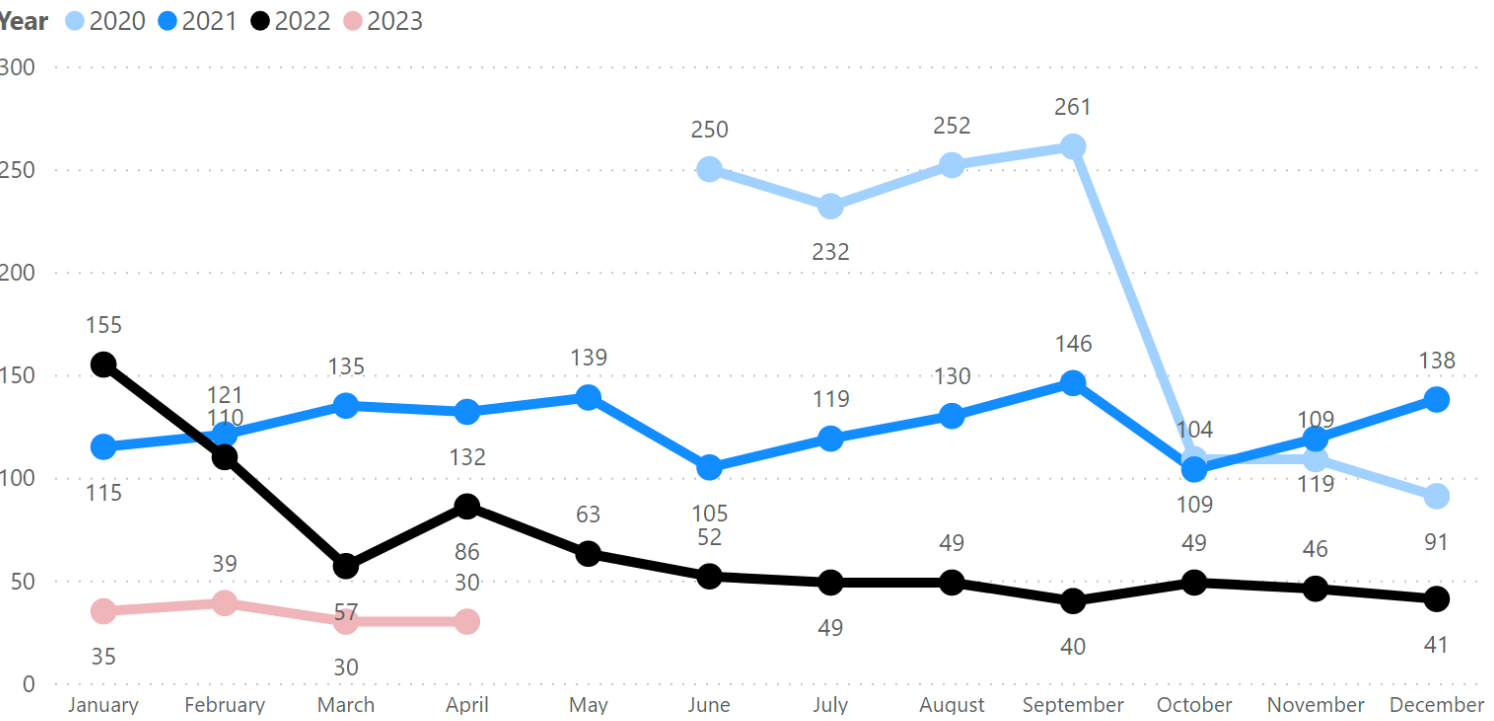


Rough sleeping management information - Off the street accommodation

Date: April 2023 | Region: All | Local Authority: Islington

Reset Filters

No. of people in off the street accommodation



30 No. of people in Off the street accommodation in April 2023

0 Change in no. of people in off the street accommodation since March 2023

0% % Change in no. of people in off the street accommodation since March 2023

-56 Change in no. of people in off the street accommodation since April 2022

-65% % Change in no. of people in off the street accommodation since April 2022

No. of people in off the street accommodation, by month by LA

Local Authority	Number of people in emergency accommodation	Change since last month	% Change since month
Islington	30	0	
Adur	No Data		
Allerdale	No Data		
Amber Valley	No Data		
Arun	No Data		
Ashfield	No Data		
Ashford	No Data		
Babergh	No Data		
Barking and Dagenham	No Data		
Barnet	No Data		
Barnsley	No Data		
Barrow-in-Furness	No Data		
Basildon	No Data		
Basingstoke and Deane	No Data		
Bassetlaw	No Data		
Bath and North East Somerset	No Data		
Bedford	No Data		
Total	30	0	

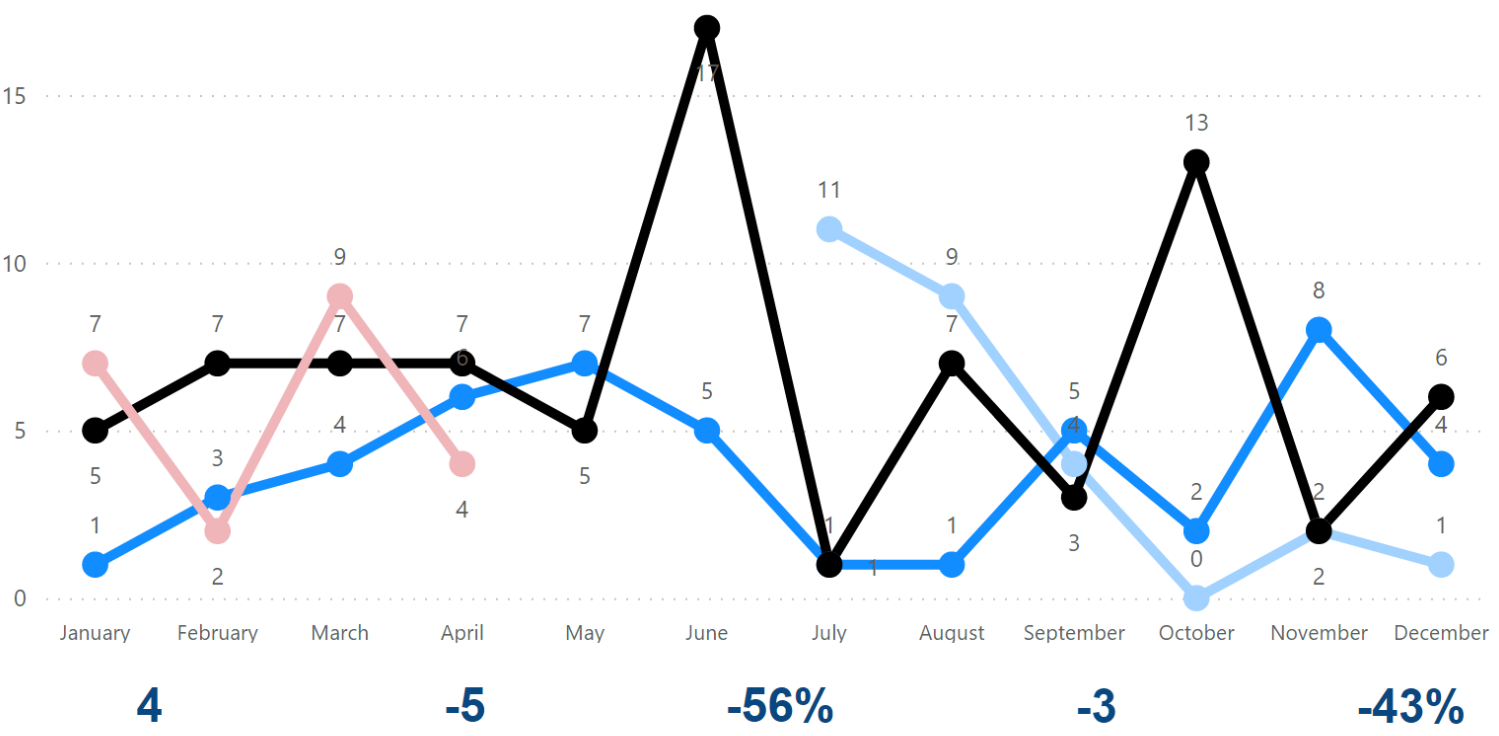
Rough sleeping management information - Move on accommodation

Date: Region: Local Authority:

[Reset Filters](#)

No. of people moved into long term accommodation

Year ● 2018 ● 2019 ● 2020 ● 2021 ● 2022 ● 2023



No. of people moved into long term accommodation, by month by LA

Local Authority	Number of people currently sleeping rough who have not had an offer of emergency or temporary accommodation	Change since last month	% Change since last month	Change since last year
Islington	0	-5	-56%	
Total	0	-5	-56%	

Number of people moving into long-term accommodation April 2023: **4**

No. of people provided move-on since March 2023: **-5**

% Change in move-on since March 2023: **-56%**

Change in move-on since April 2022: **-3**

% Change in move on since April 2022: **-43%**

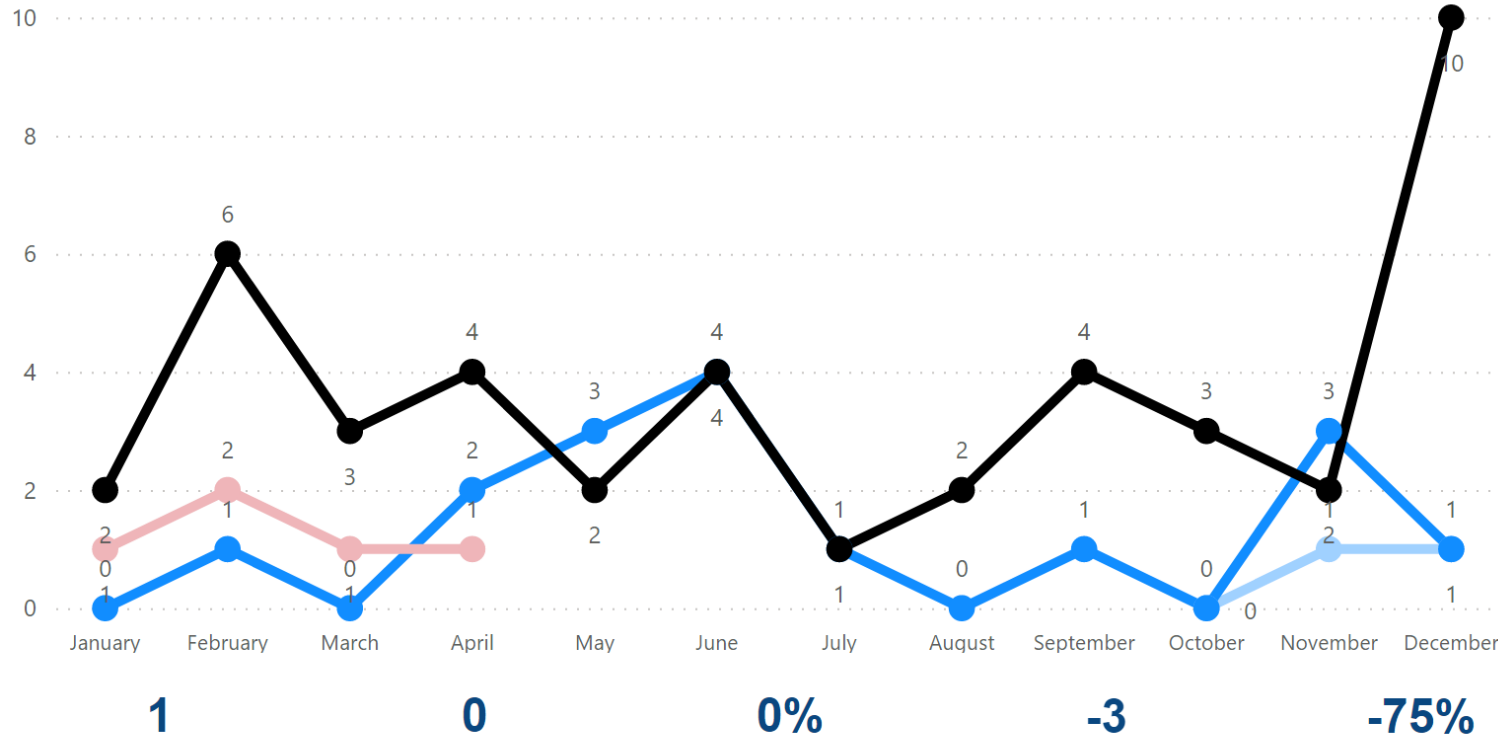
Rough sleeping management information - Left without move on arrangements

Date: Region: Local Authority:

Reset Filters

No. of people left without move-on arrangements

Year ● 2020 ● 2021 ● 2022 ● 2023



Number of People who left without move on in April 2023

Change in left without move on since March 2023

% Change in left without move on since March 2023

Change in left without move on since April 2022

% Change in left without move on since April 2022

No. of people left without move-on by month by LA

Local Authority

Number of people who have left emergency accommodation without move-on arrangements since last month

Islington	1
Adur	No Data
Allerdale	No Data
Amber Valley	No Data
Arun	No Data
Ashfield	No Data
Ashford	No Data
Babergh	No Data
Barking and Dagenham	No Data
Barnet	No Data
Barnsley	No Data
Barrow-in-Furness	No Data
Basildon	No Data
Basingstoke and Deane	No Data
Bassetlaw	No Data
Bath and North East Somerset	No Data
Bedford	No Data
Total	1